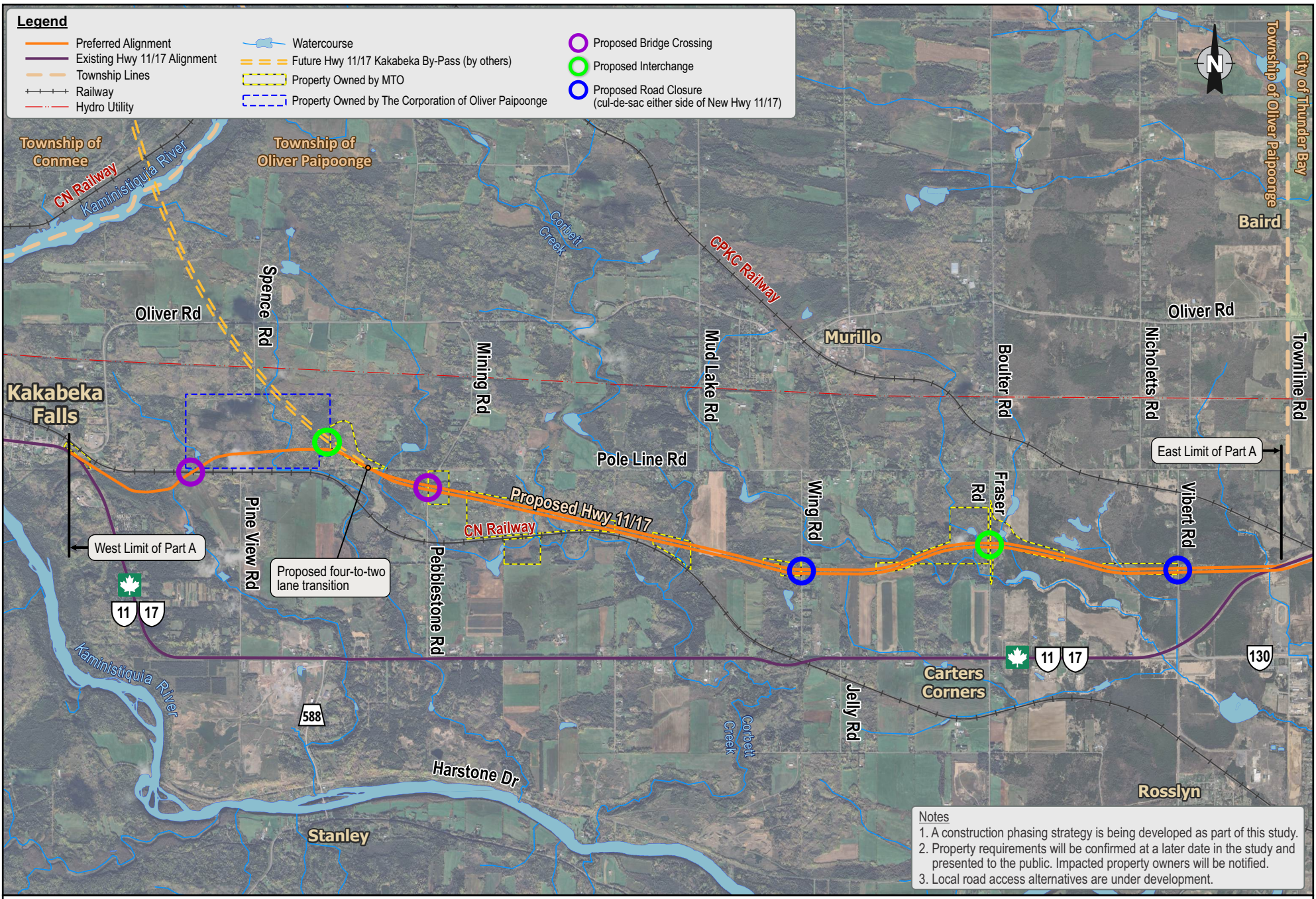


Legend

Preferred Alignment	Watercourse	Proposed Bridge Crossing
Existing Hwy 11/17 Alignment	Future Hwy 11/17 Kakabeka By-Pass (by others)	Proposed Interchange
Township Lines	Property Owned by MTO	Proposed Road Closure (cul-de-sac either side of New Hwy 11/17)
Railway	Property Owned by The Corporation of Oliver Paipoonge	
Hydro Utility		



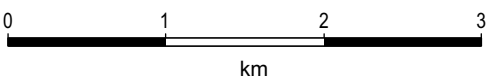
West Limit of Part A

East Limit of Part A

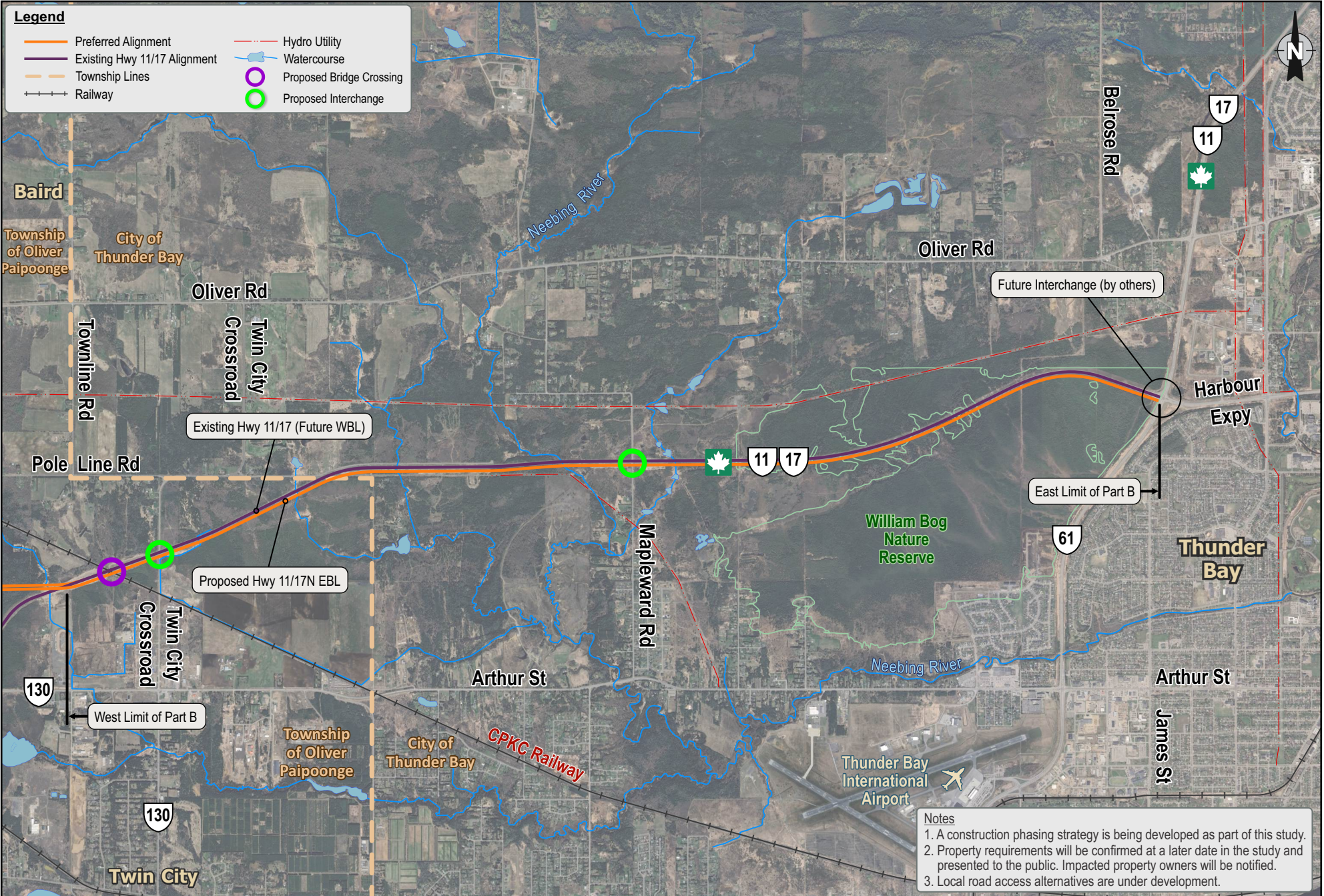
Proposed four-to-two lane transition

Notes
 1. A construction phasing strategy is being developed as part of this study.
 2. Property requirements will be confirmed at a later date in the study and presented to the public. Impacted property owners will be notified.
 3. Local road access alternatives are under development.

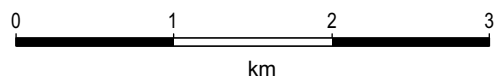
Highway 11/17 Widening to Four Lanes
 from Kakabeka Falls Easterly to Thunder Bay
 EOI/RFP 6023-Z-0047



Key Plan
 Part A - New Alignment



Highway 11/17 Widening to Four Lanes
 from Kakabeka Falls Easterly to Thunder Bay
 EOI/RFP 6023-Z-0047



Key Plan
 Part B - Twinning to the South